



# STOURFLEX®

J & P Supplies Ltd

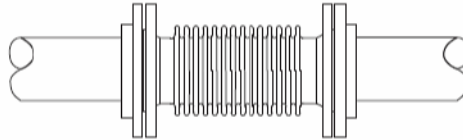
Expansion Joints & Pipeline Equipment

## Standard Symbols for use on Pipework Layouts.

### Stainless Steel Expansion Joints.

#### Axial Expansion Joints.

Flanged Type JP116.

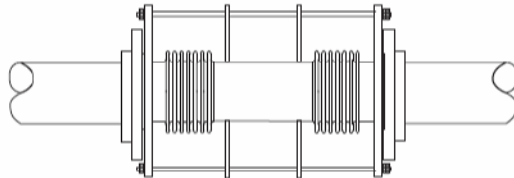


#### Draughtsman's Symbol.

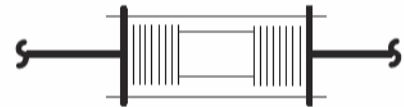


#### Lateral Expansion Joints.

Flanged Type JP120.

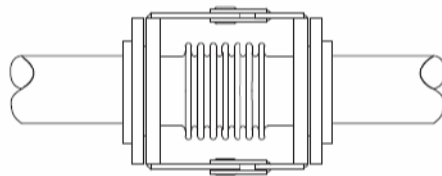


#### Draughtsman's Symbol.

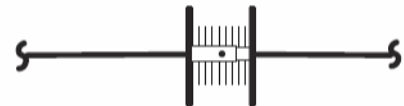


#### Angular Expansion Joints.

Flanged Type JP122.

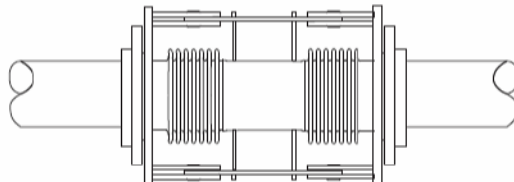


#### Draughtsman's Symbol.

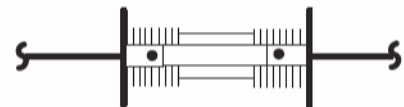


#### Articulated Expansion Joints.

Flanged Type JP124.

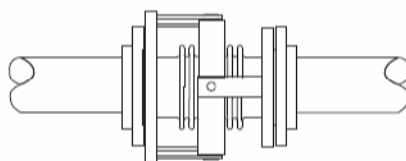


#### Draughtsman's Symbol.

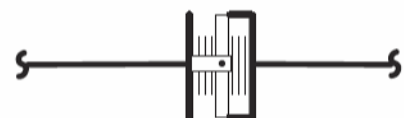


#### Gimbal Expansion Joints.

Flanged Type JP126.



#### Draughtsman's Symbol.





# STOURFLEX®

J & P Supplies Ltd

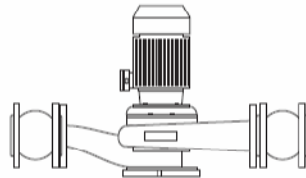
Expansion Joints & Pipeline Equipment

## Standard Symbols for use on Pipework Layouts.

### Pump Connectors.

#### Rubber Bellows.

Untied Type JP01.



Pump

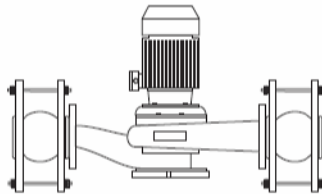
#### Draughtsman's Symbol.



Pump

#### Rubber Bellows.

Untied Type JP02.



Pump

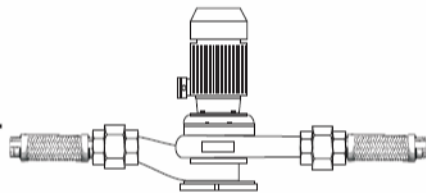
#### Draughtsman's Symbol.



Pump

#### Stainless Steel Pump Connectors Screwed.

Screwed Type JP20.



Pump

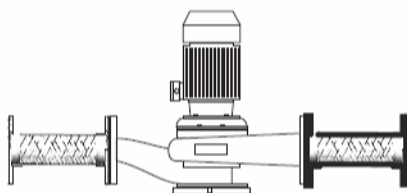
#### Draughtsman's Symbol.



Pump

#### Stainless Steel Pump Connectors Flanged.

Flanged Type JP21.



Pump

#### Draughtsman's Symbol.



Pump

